

# MONTHLY MEMBERSHIP PROGRESS REPORT

District C 1

Results as of: 5/31/2024

GMT:

LOCATION ALBERTA

GMT CA

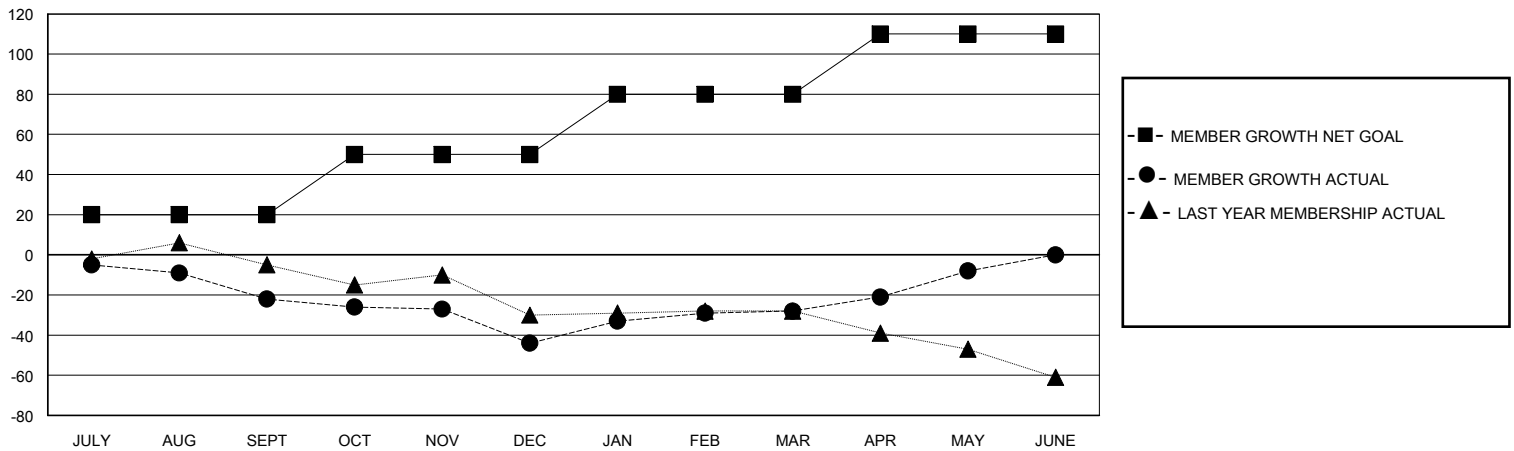
Clubs			
RESULTS FOR 2023-2024			
QUARTER	NEW CLUB GOAL	NEW CLUBS	DROPPED CLUBS
JULY/AUG/SEPT	0	0	0
OCT/NOV/DEC	0	0	1
JAN/FEB/MAR	0	0	0
APR/MAY/JUNE	1	0	0

Members			
RESULTS FOR 2023-2024			
QUARTER	MEMBER GROWTH NET GOAL	MEMBER GROWTH ACTUAL	DROPPED MEMBERS ACTUAL (including transfers)
JULY/AUG/SEPT	20	24	41
OCT/NOV/DEC	30	33	52
JAN/FEB/MAR	30	58	38
APR/MAY/JUNE	30	41	19

GOALS AND ACTUAL NEW CLUBS CUMULATIVE



GOALS AND ACTUAL MEMBERS CUMULATIVE



DROPPED CLUBS: 1	42 CLUBS OF 89 ADDED 1 OR MORE NEW MEMBERS	<b>GENDER DISTRIBUTION</b> MALE 987 (61.27%) FEMALE 624 (38.73%)
<b>DROPPED MEMBERS</b> DECEASED 30 CLUB CANCELLED 0 OTHER 119 TOTAL 149	<a href="#">CLICK HERE FOR CUMULATIVE MEMBERSHIP DATA</a>	TOTAL FAMILY UNIT MEMBERS 327 FAMILY MEMBERS PAYING HALF DUES 168